

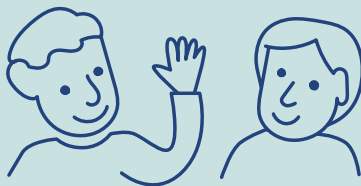
WELCOME TO ENJOY CULTURE!

Instructions for your visit.

Prior to the visit ▶



You are welcome as you are. We apply the principles for a safer space. For more information about the principles, please see the website.



Would you like a friend to accompany you during your visit? Ask a volunteer companion to join you! You can send an email to luotsivaraus@tampere.fi or phone us at +358 40 806 3910 on Mondays and Thursdays between 10:00 and 12:00.



There is an interval in many performances. During the interval, you can have a cup of coffee, for example. You can place an order for your interval catering in advance or buy what you want on site.

For assistants

Familiarise yourself with the venue before your visit. The venue's website provides information about accessible entrances, bathrooms and other important details.

During the visit ▶

Please arrive at the venue in good time, about half an hour before the start of the performance. You will no longer be able to enter the auditorium once the performance has begun.



Leave your outdoor clothing and any large bags in the cloakroom.



Turn off your phone or set it to silent mode before the start of the performance. Do not use your phone during the performance.



You may take photographs of the performers after the performance has ended.



Be considerate to others.

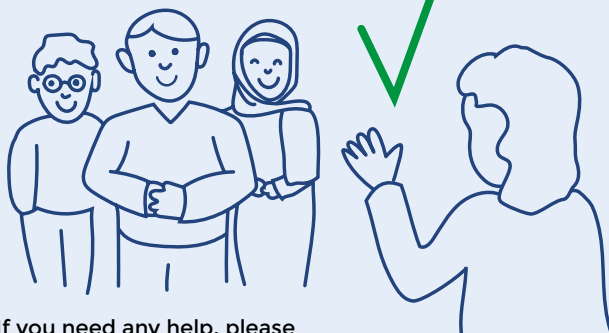
Eating your own snacks during the performance is not allowed.



Please do not use any strongly scented products.



This symbol on a bathroom door indicates that the toilet is meant for all genders.



If you need any help, please don't hesitate to ask the staff.

Let's enjoy the performance together!



TAMPERE

Scan the QR code with your phone to view the brochure in different languages.

