



YLIOPISTONKATU 56



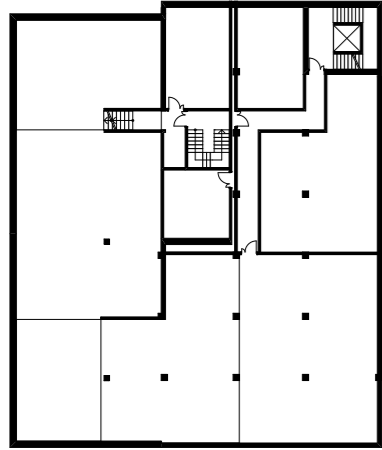
TILANNE LISÄRAKENTAMISEN JÄLKEEN



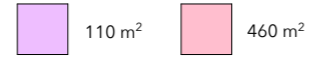
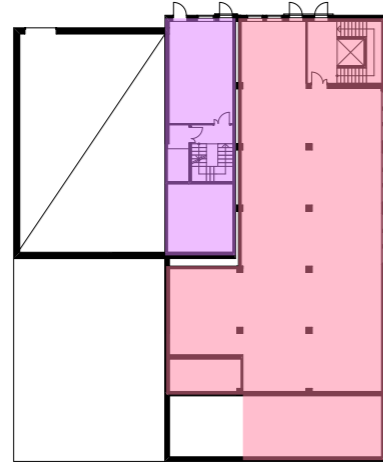
uudisosa



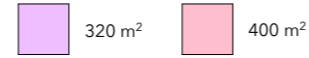
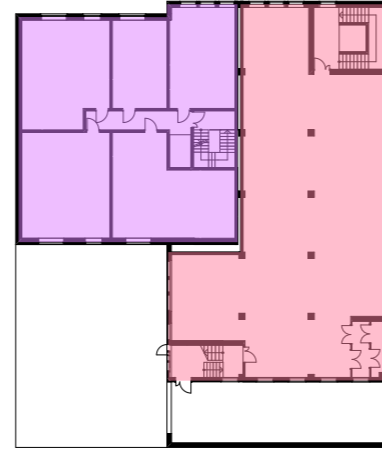
vanha osa



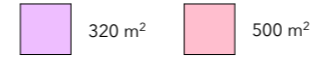
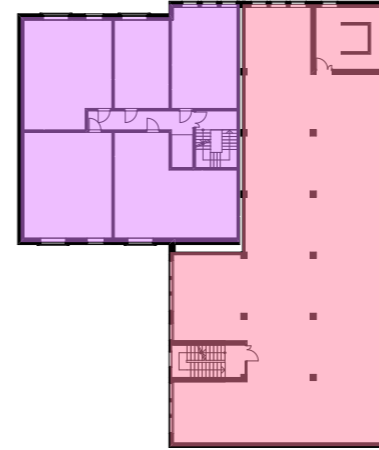
Alakellari



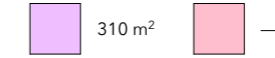
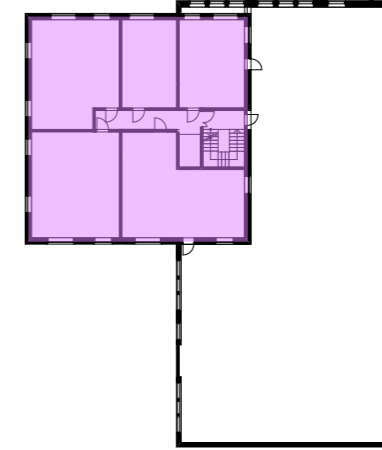
Yläkellari



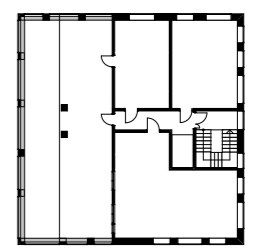
1. krs



2. krs - 6. krs



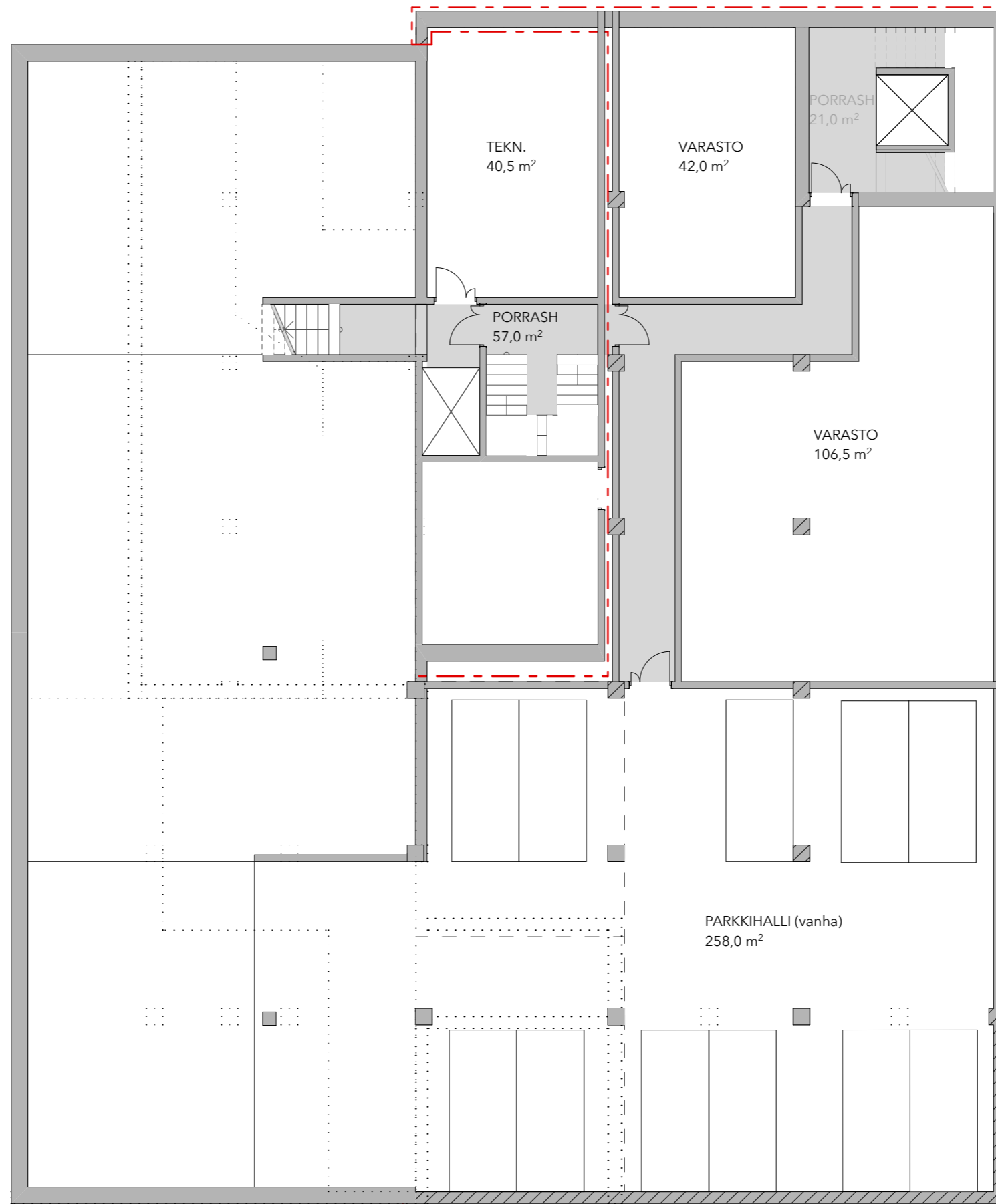
7. krs - 12. krs



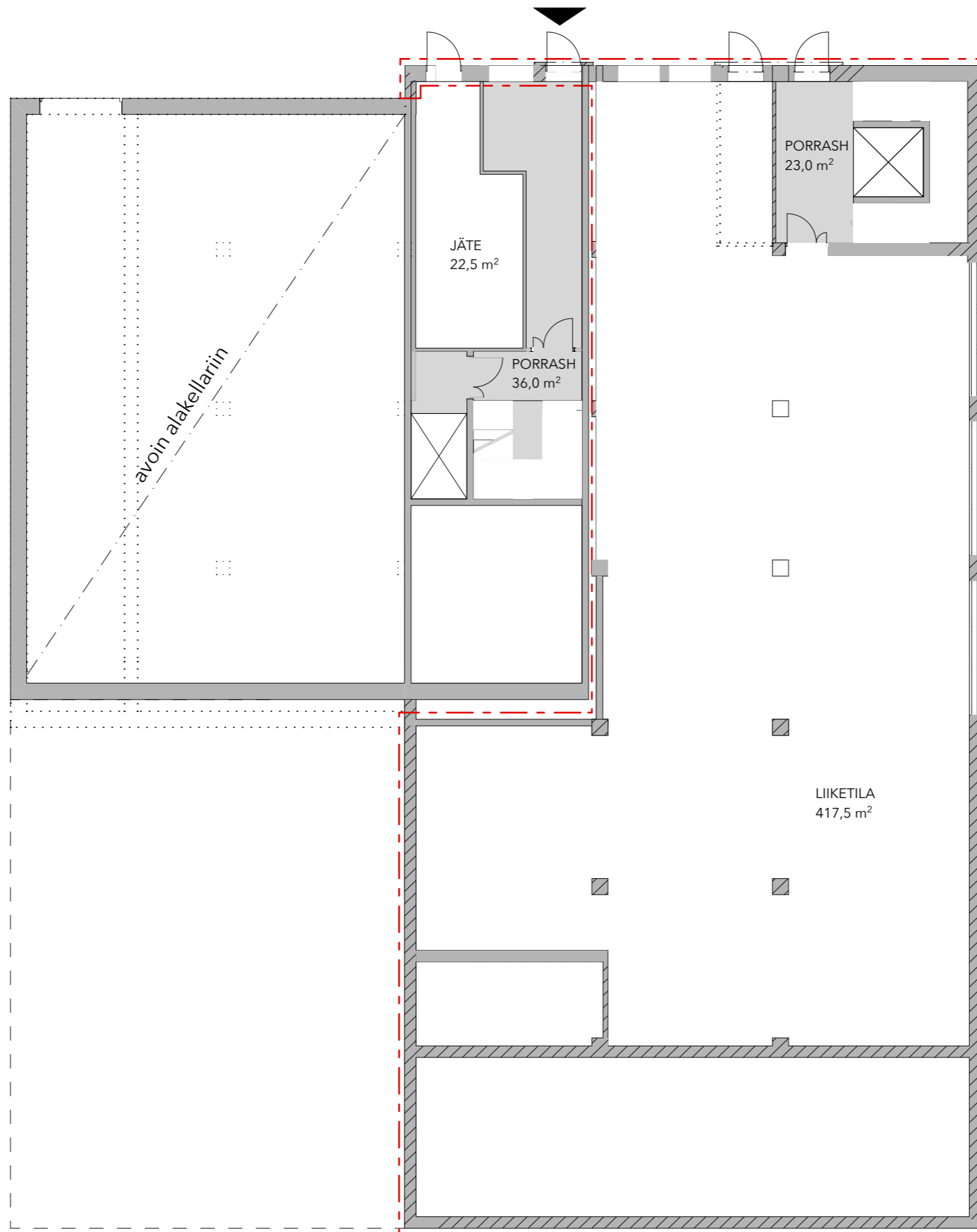
Yhteistilat ja terassi 13. krs

	uudis	säilyvä	yhteensä
KEM 250	3950	3380	7330
symbolinen leikkauskuva			

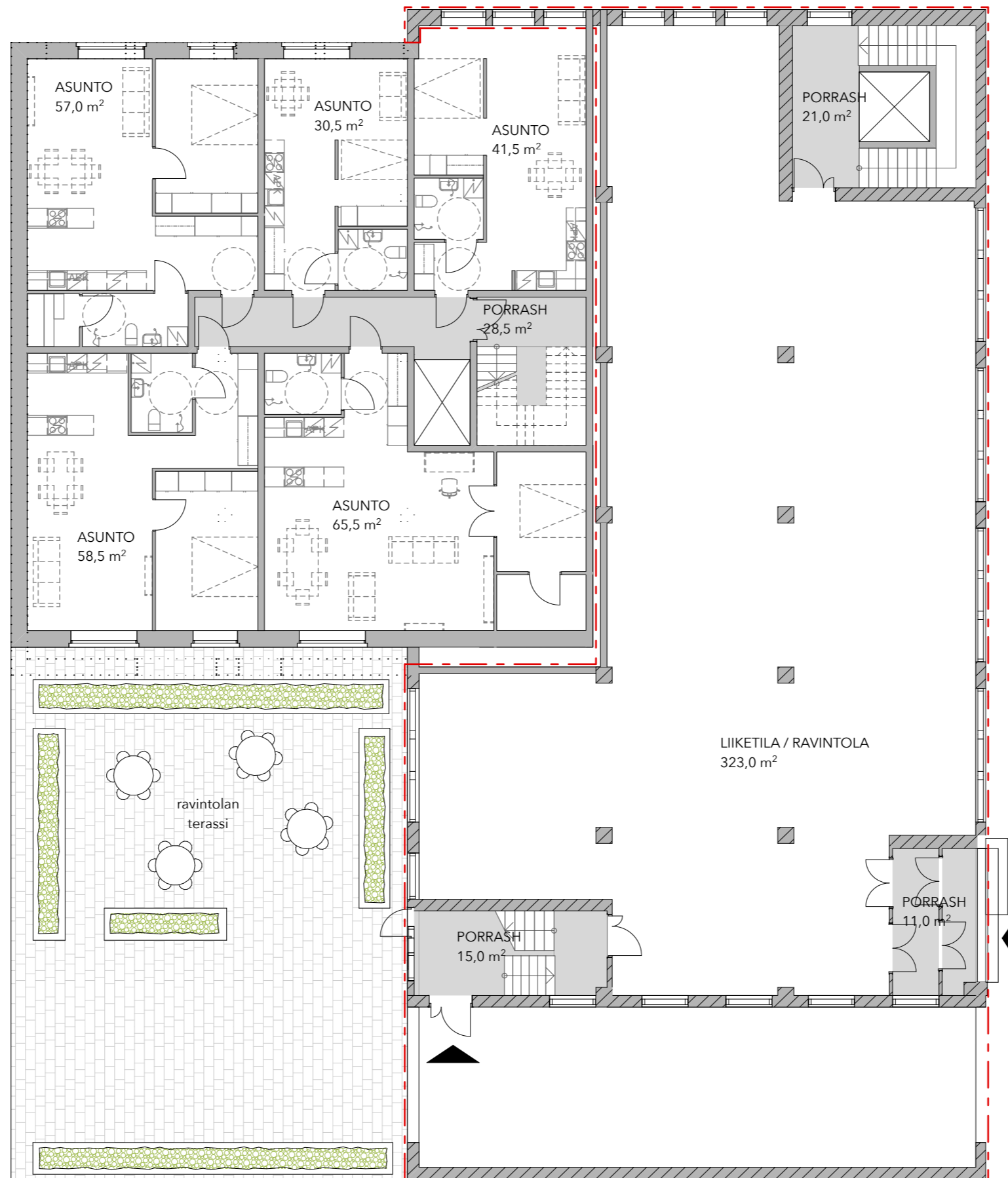
Kiinteistöä ei ole tarkistusmitattu; pinta-alat verrannollisia keskenään vain tämän dokumentin puitteissa.



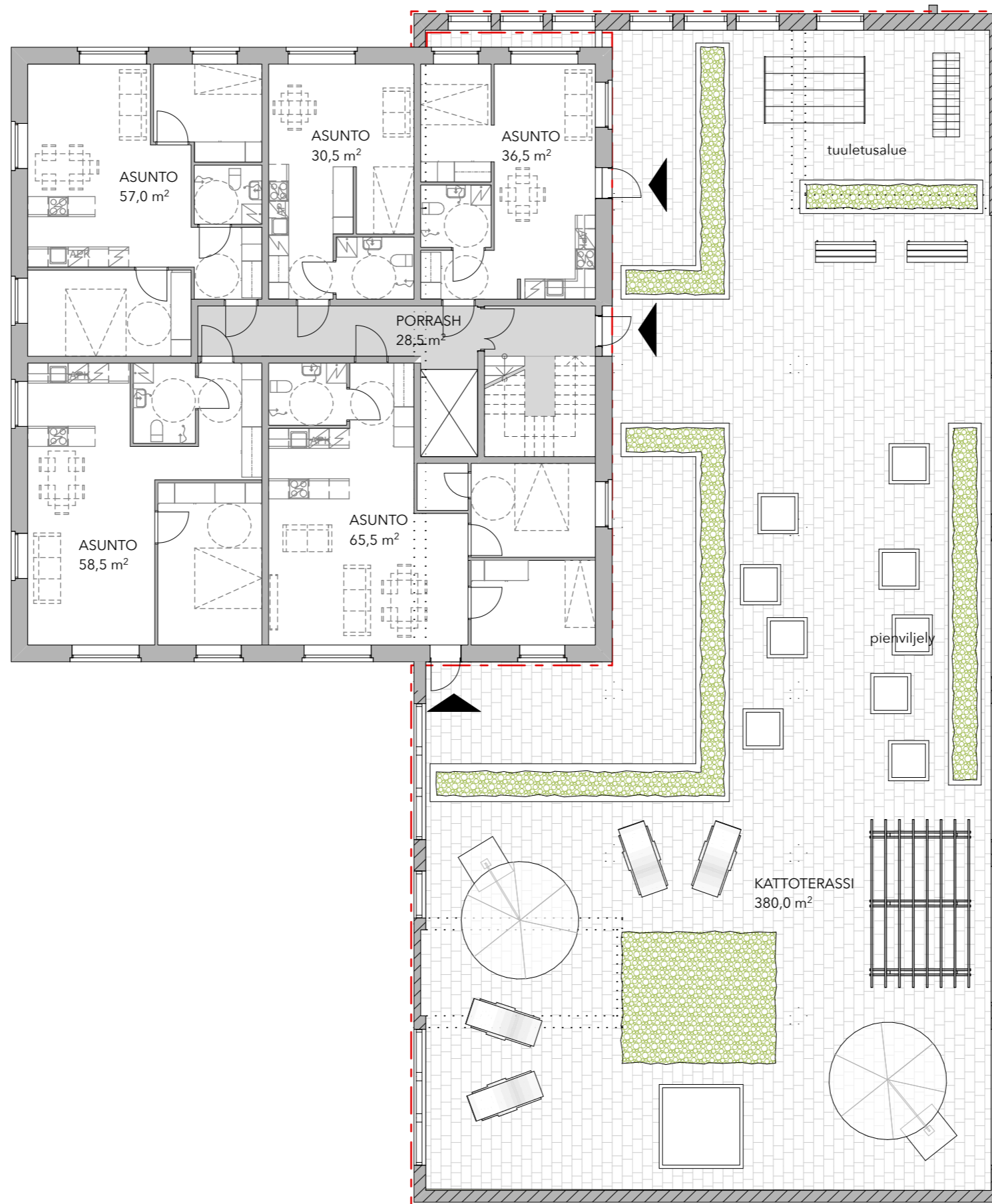
-  säilytettävä osa
-  purettava rakenne
-  uusi rakenne
-  vanha vanha



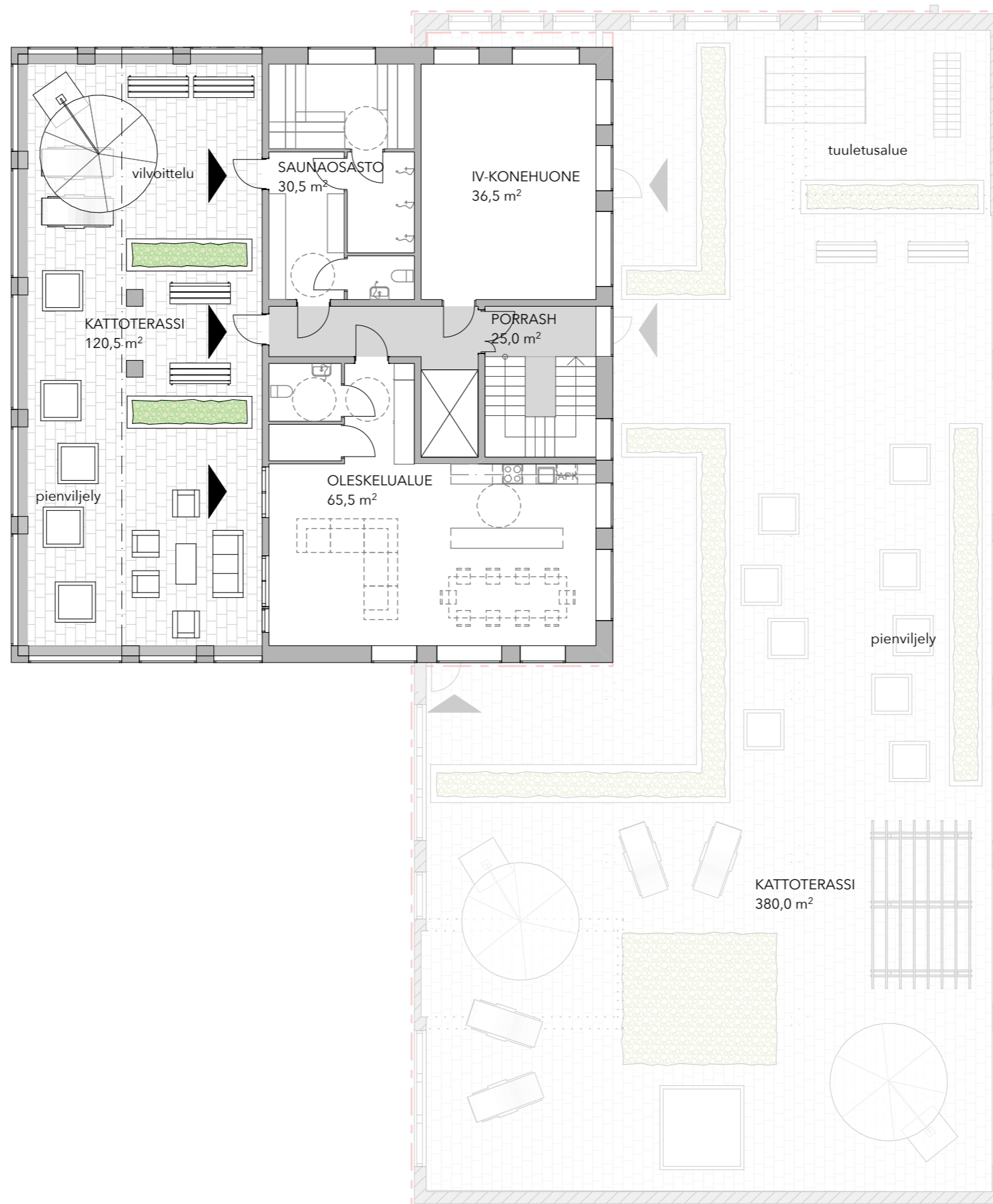
-  säilytettävä osa
-  purettava rakenne
-  uusi rakenne
-  vanha vanha



-  säilytettävä osa
-  purettava rakenne
-  uusi rakenne
-  vanha vanha


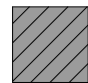


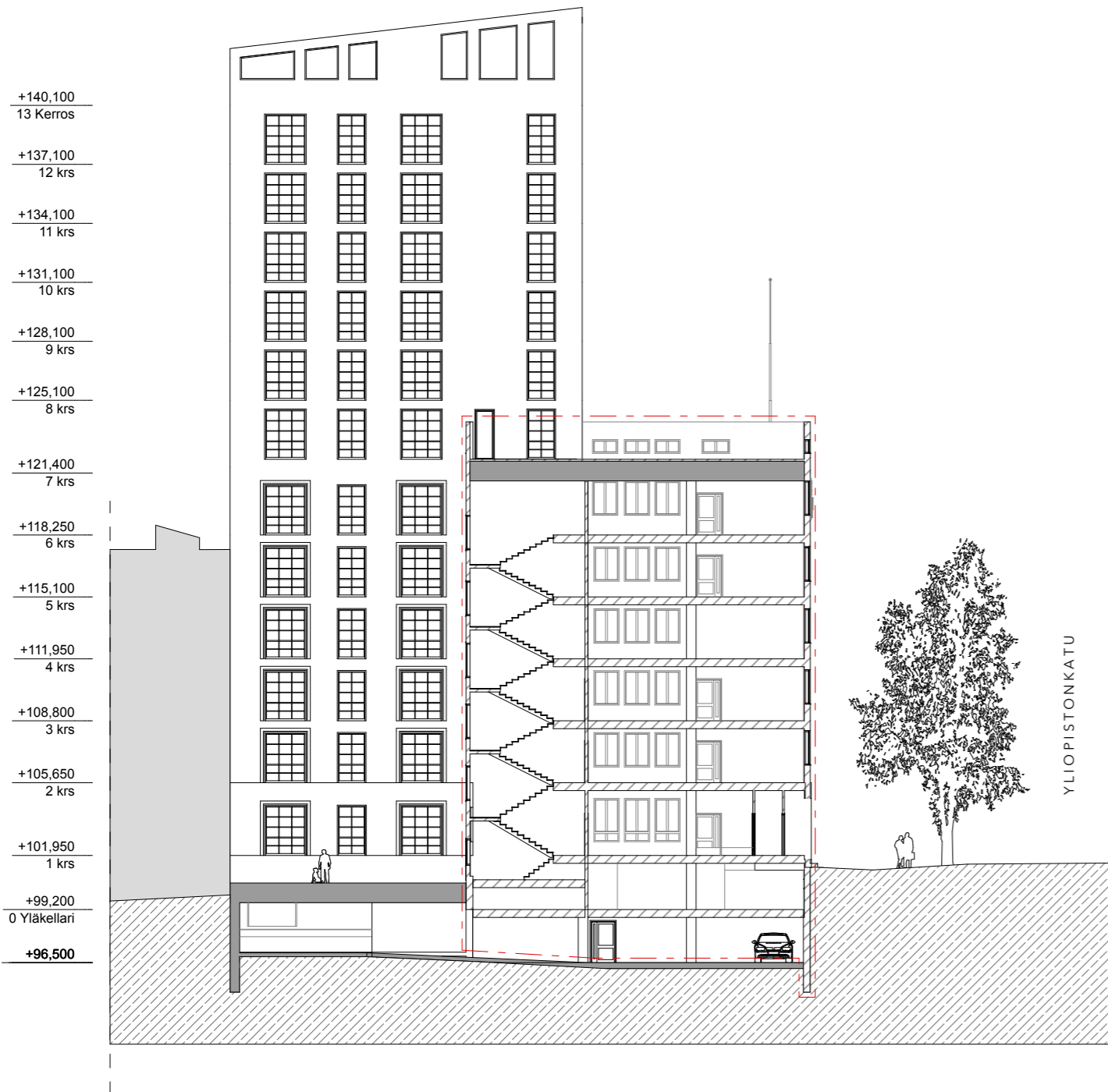
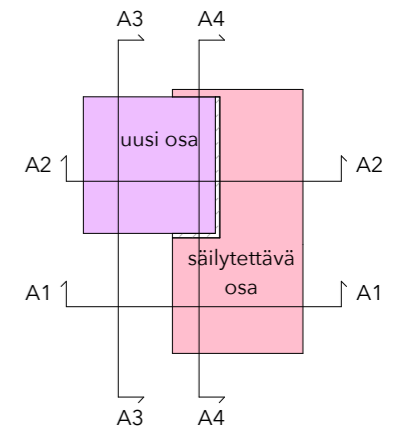
- säilytettävä osa
- purettava rakenne
- uusi rakenne
- vanha vanha



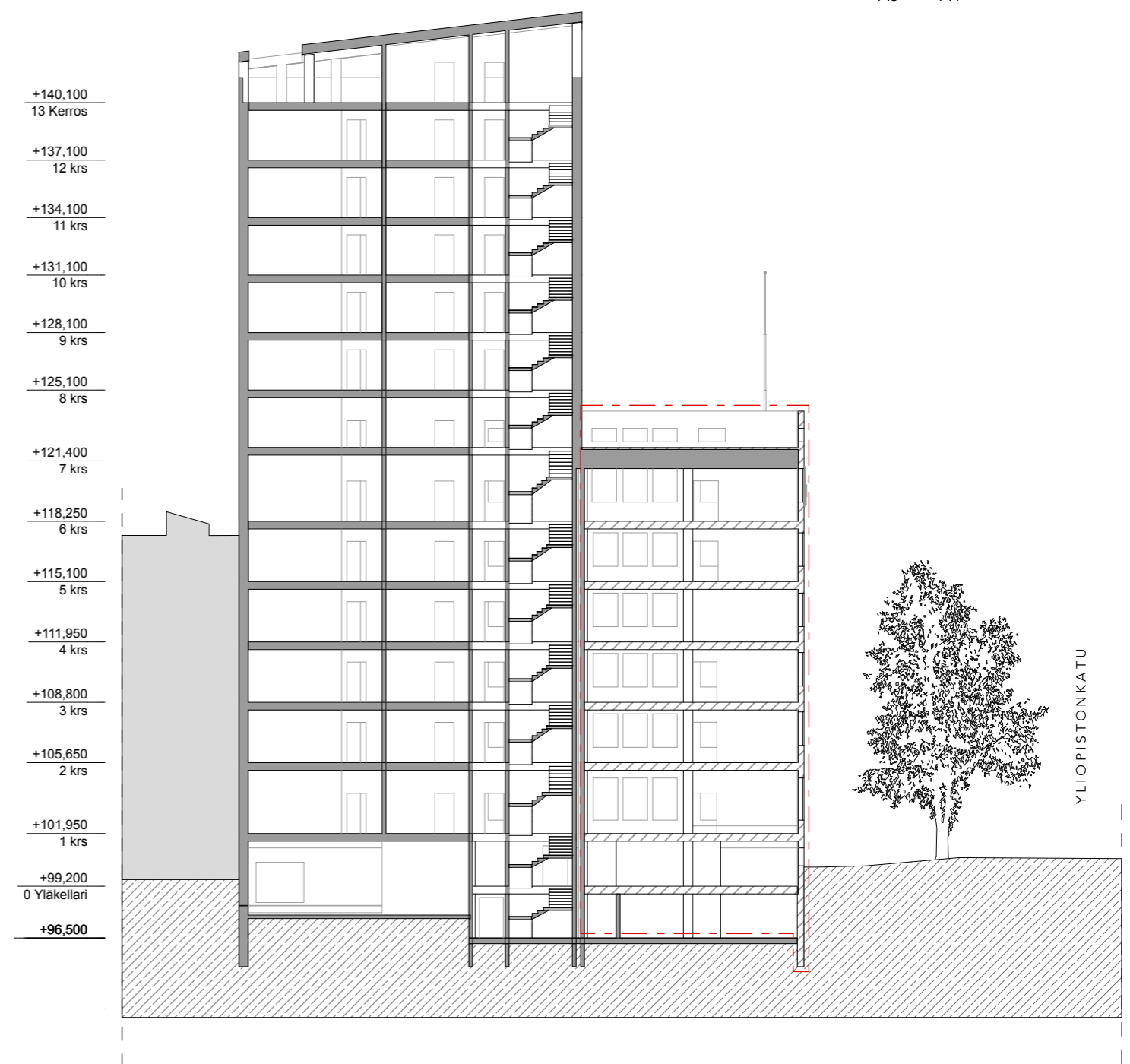
- säilytettävä osa
- purettava rakenne
- uusi rakenne
- vanha vanha

Rakenneleikkaus

-  uusi rakenne
-  vanha rakenne


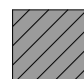


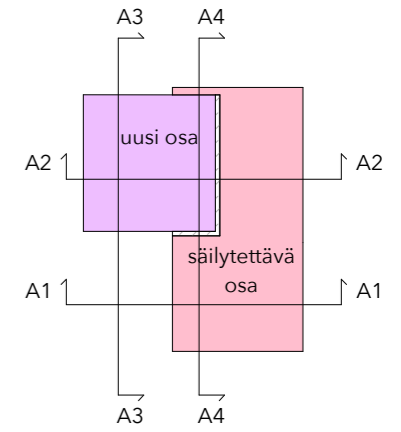
Vanhan osa leikkaus, A1



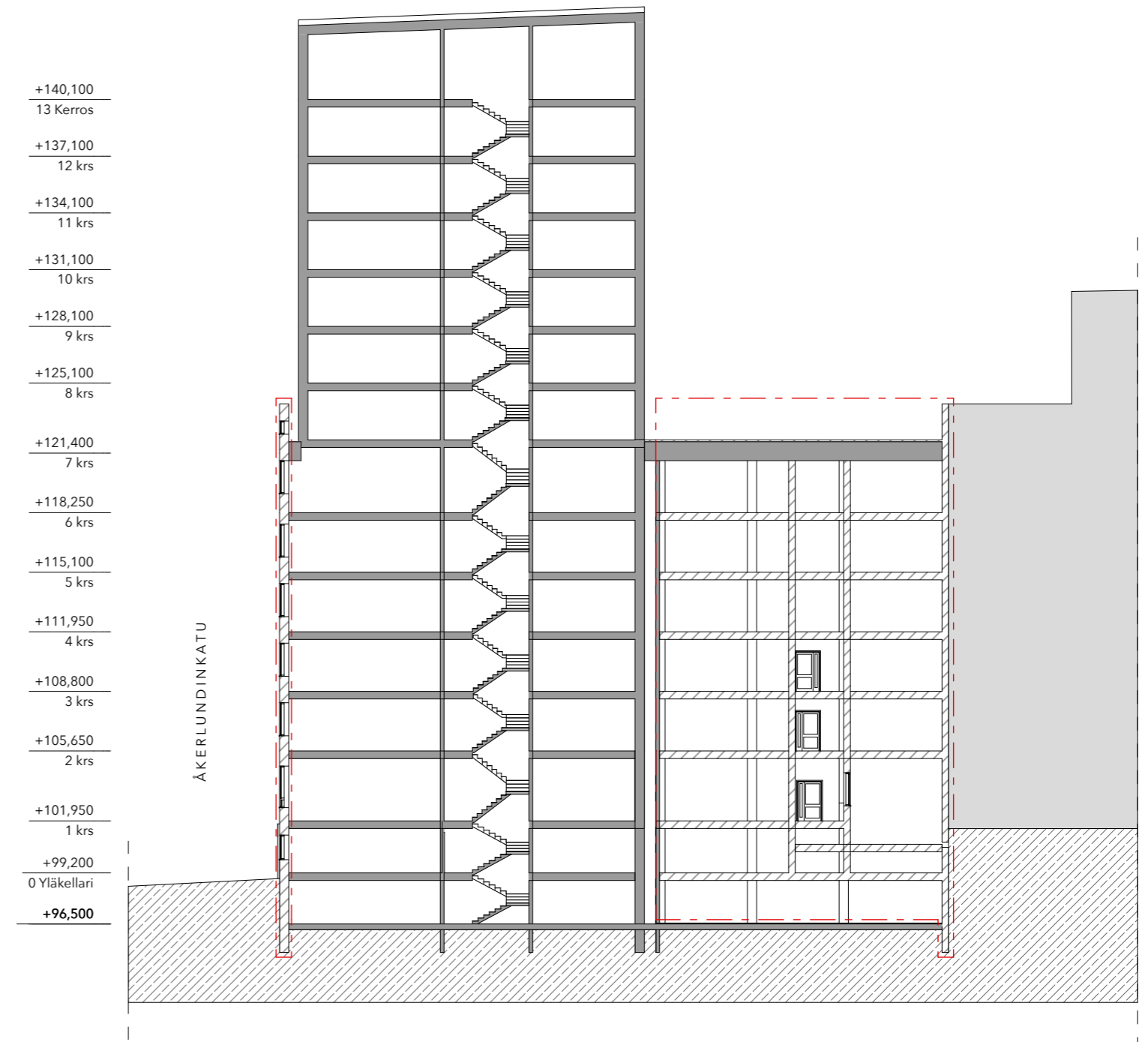
Uuden ja vanhan osa leikkaus, A2

Rakenneleikkaus

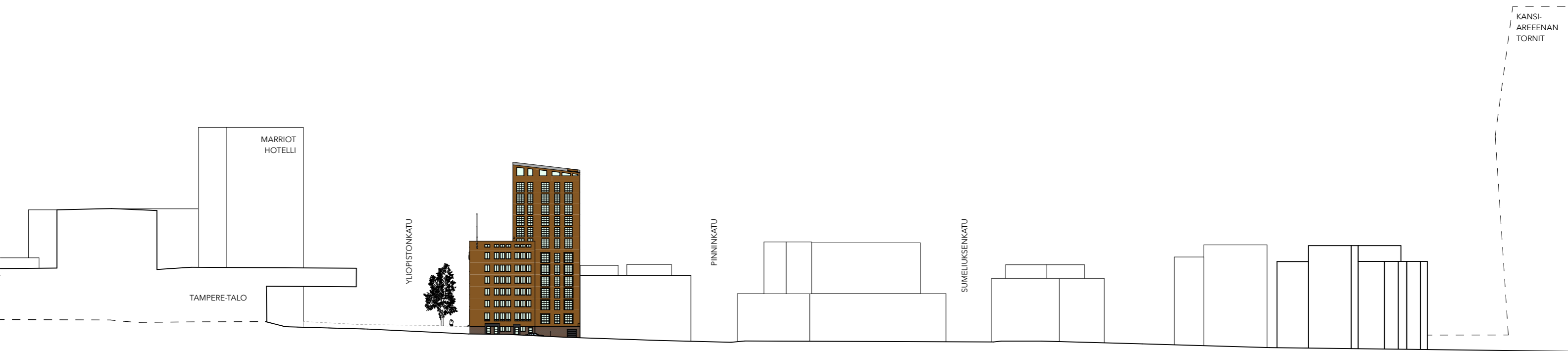
-  uusi osa
-  vanha osa



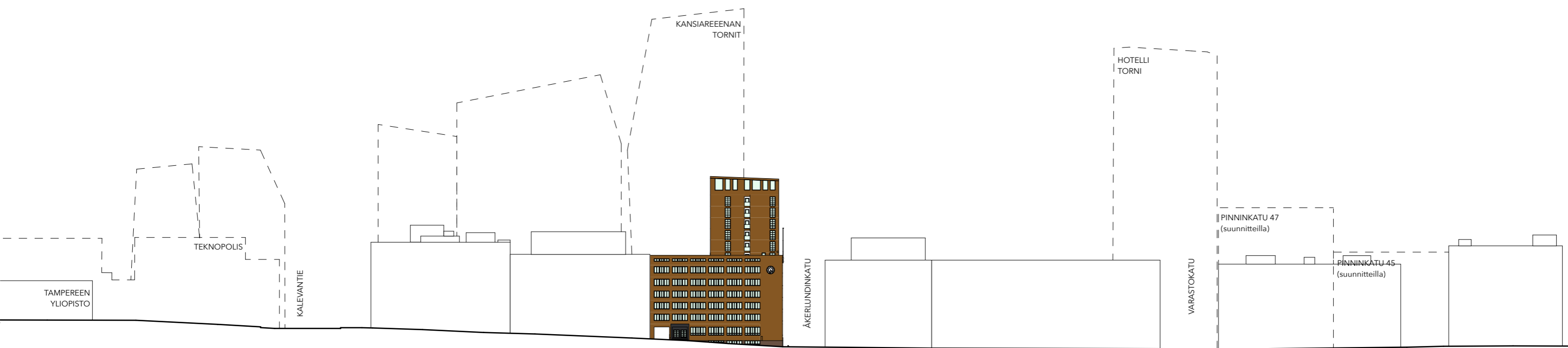
Uuden osa leikkaus, A3



Uuden ja vanhan osa leikkaus, A4



Katuleikkaus åkerlundinkadulta



Katuleikkaus yliopistonkadulta



Näkymä Yliopistonkadulta
6100 Yliopistonkatu 56
2.11.2020



Näkymä terassilla
6100 Yliopistonkatu 56
2.11.2020