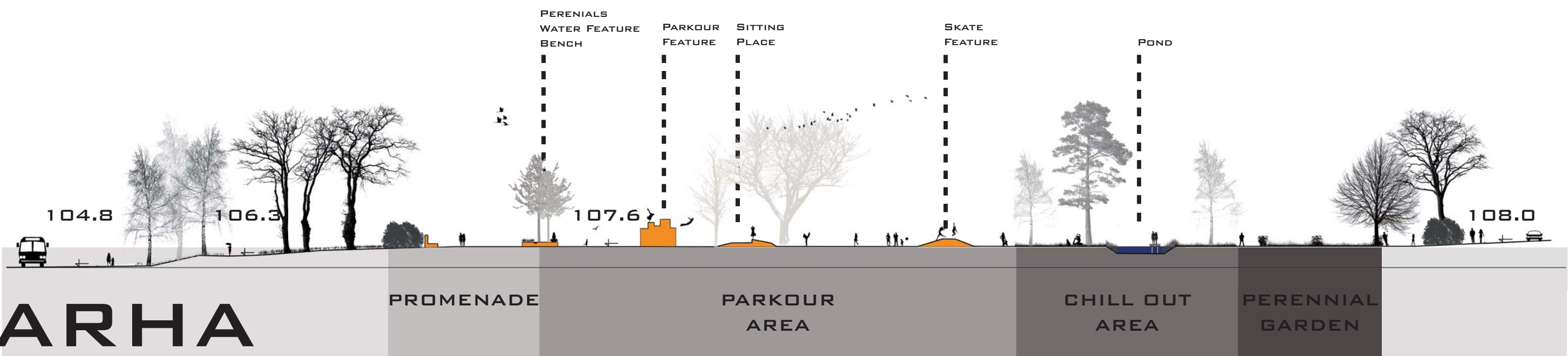




HDIN PUUTARHA



SECTION AA' 1:300

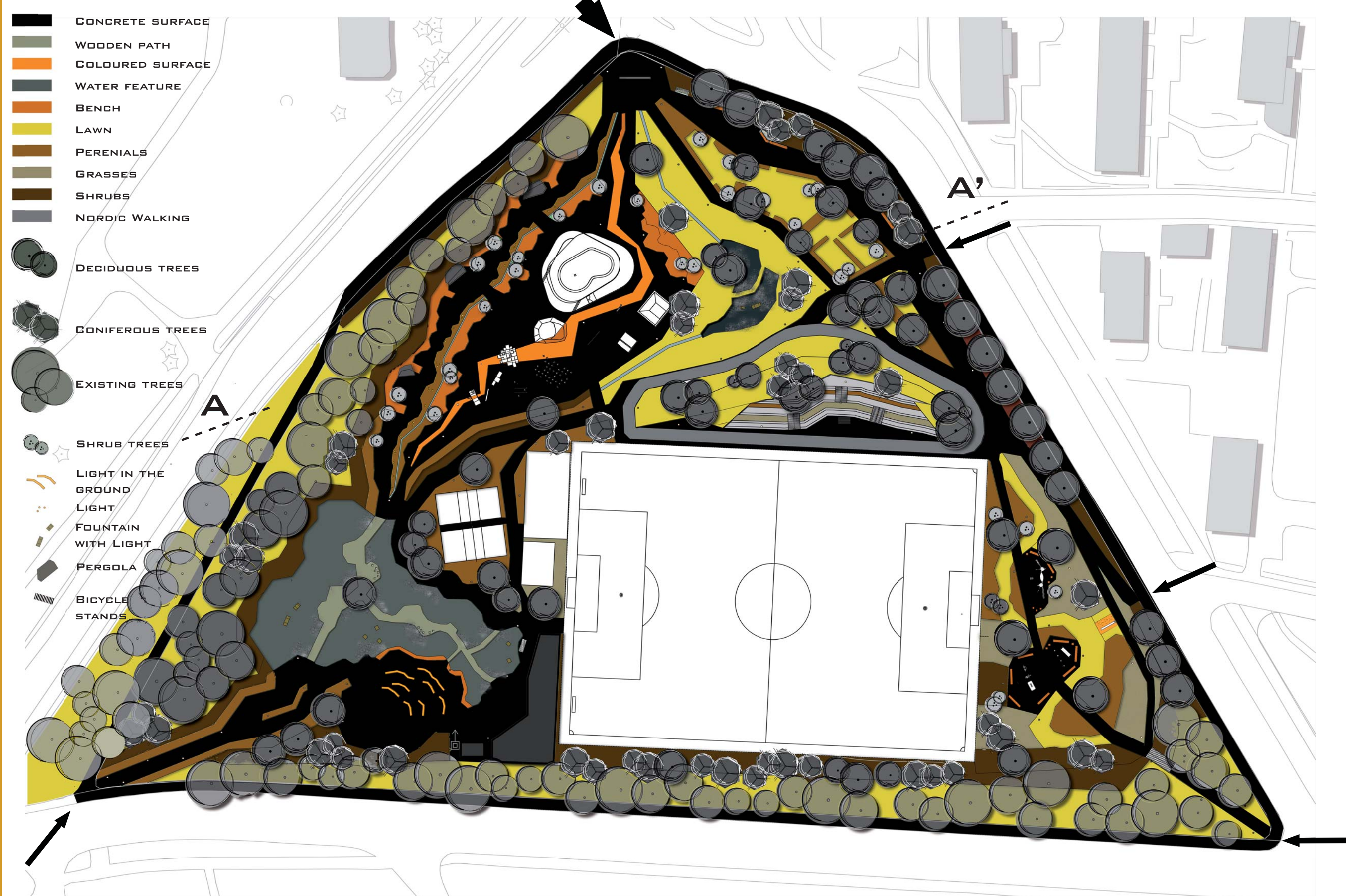
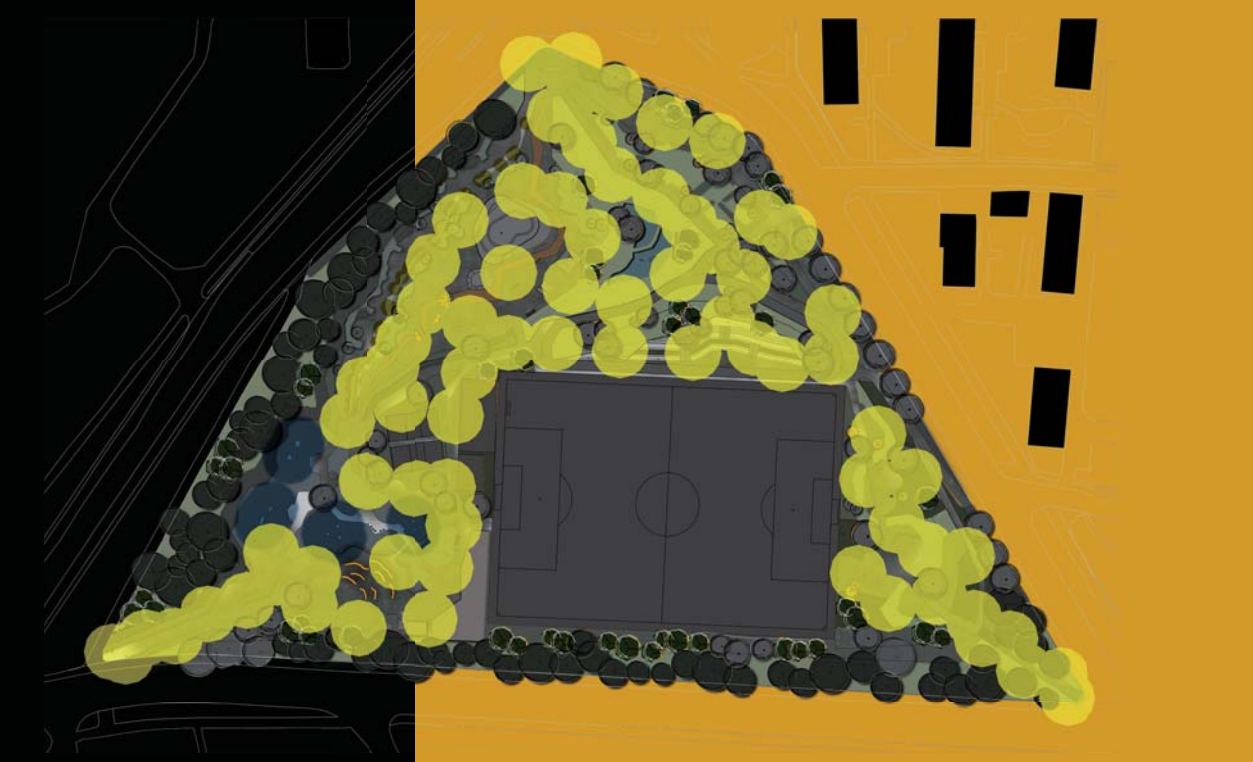
MASTER PLAN 1:400

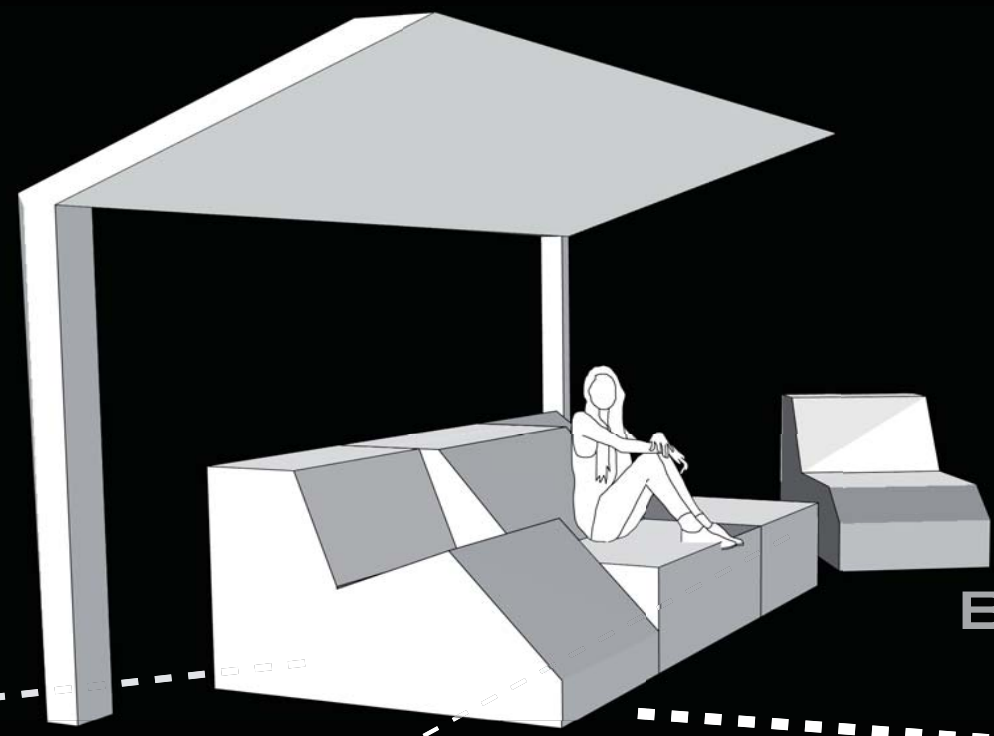
WATER ELEMENT IS THE MAIN FEATURE OF THIS PARK WHERE AHTI IS THE PATRON. IT IRRIGATES THE AREA IN THE SAME WAY AS CHANNEL FROM NÄSIJÄRVI LAKE FLOWS THROUGH TAMPERE. THE SPRING AND SOURCE OF THE PARK IS REPRESENTED BY A SYMBOLIC GATE WITH WATERFALL FEATURE SITUATED IN THE NORTH WHERE THE MAIN ENTRANCE TO THE PARK STANDS. WATERFALL REFERS TO THE POWER PLANT ON THE CHANNEL IN THE CENTRE OF TAMPERE AND WILL ATTRACT PEOPLE'S ATTENTION FROM SURROUNDINGS. IN THIS PLACE EVERYTHING BEGINS, THE ENERGY OF WATER THAT DESCRIBES THIS PLACE CONTINUES IN SEVERAL ARMS THROUGH THE PARK AND IN SOME PLACES IT IS PERSONIFIED BY FLOWER BEDS, PATHS OR COLOURED SURFACES. ALL THESE ARMS LEAD UP AND CONNECT IN THE LAKE SITUATED AT THE CENTRAL AREA IN THE SOUTH. IN THIS AREA BOTH MAIN BUILDING AND SPACE DESIGNATED FOR CONCERTS, THEATER EVENTS AND EXHIBITIONS ARE LOCATED. THIS LIVING PLACE IS A NATURAL ENDING OF A JOURNEY INTO THE PARK. MODERN GEOMETRIC CURVES DESIGNING THE SPACE BRING DYNAMICS TO THIS PLACE. CONTEMPORARY DESIGN FOCUSING ON YOUNG PEOPLE CREATES A UNIQUE AREA FOR TAMPERE. A MUST SEE FOR EVERYONE!

CONCEPT

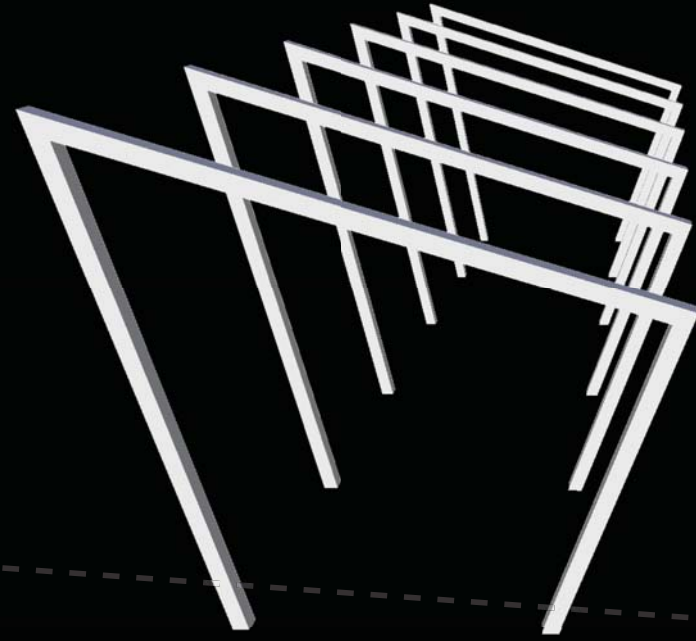


LIGHTING

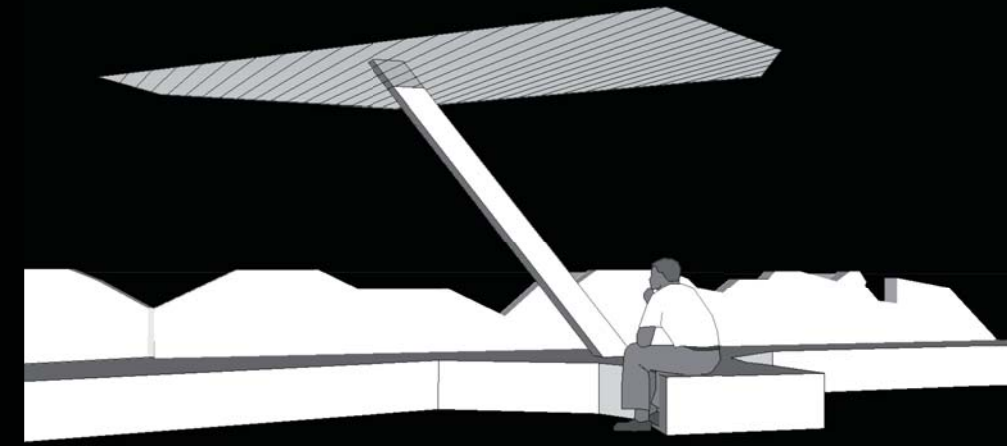




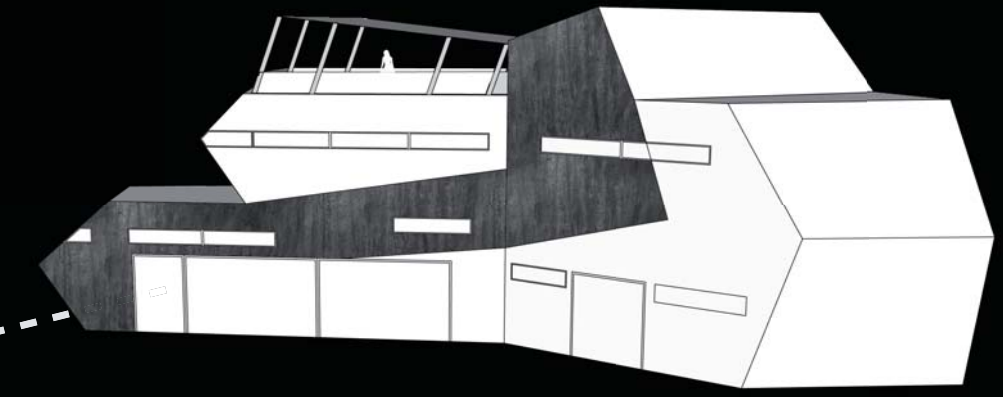
BENCH



BICYCLE STANDS



PERGOLA



HOUSE

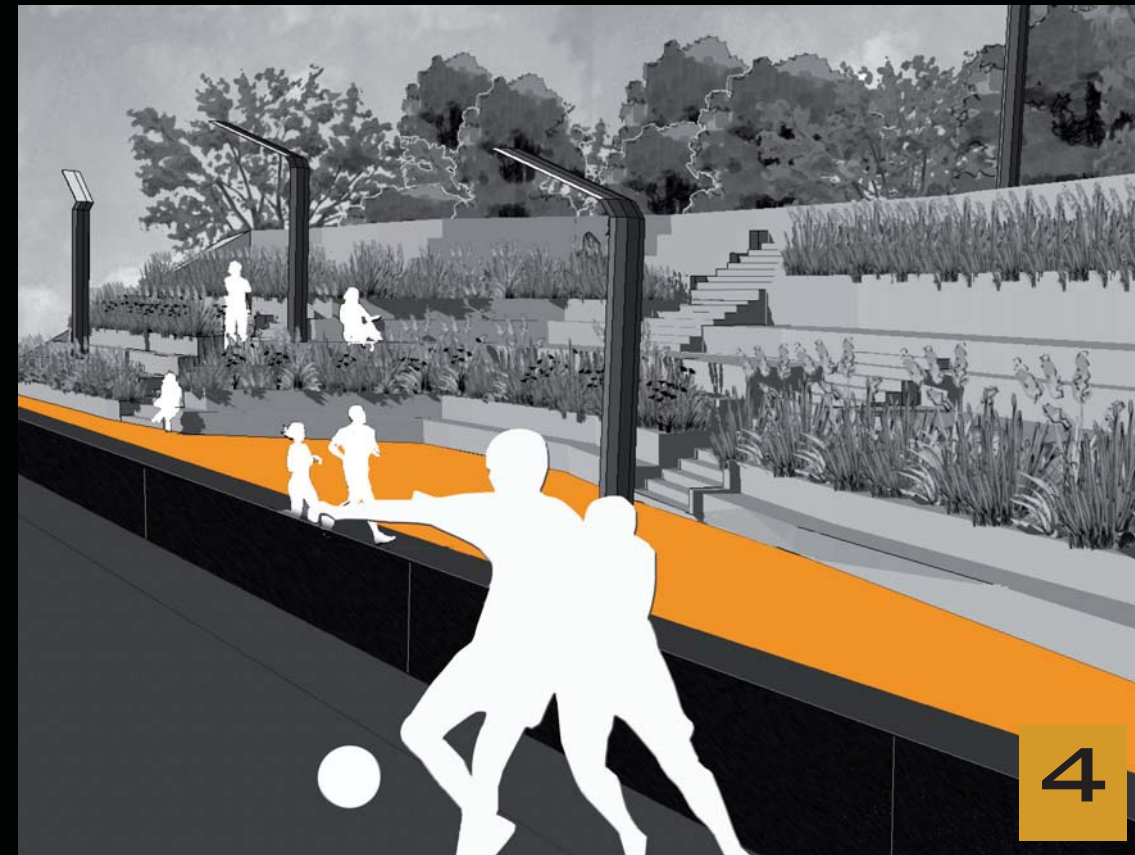
DETAILS

LAKE AREA

FOCAL POINT OF AHDIN PUTARHA IS WHERE ALL THE PATHS LEAD UP TO. PEOPLE CAN REST IN DIFFERENT SEATING POSITION IN THE MIDDLE OF A LAKE AND ADMIRE PECULIAR FOUNTAINS IN THE DAY OR THEIR LIGHTS IN THE NIGHT. FUTURISTIC BUILDING ACCOMMODATES BACKGROUND FACILITIES FOR SPORTS, RESTAURANT AND COFFEE PLACE ON A ROOF TERRACE WITH LIBRARY ABOUT SPORTS.



1



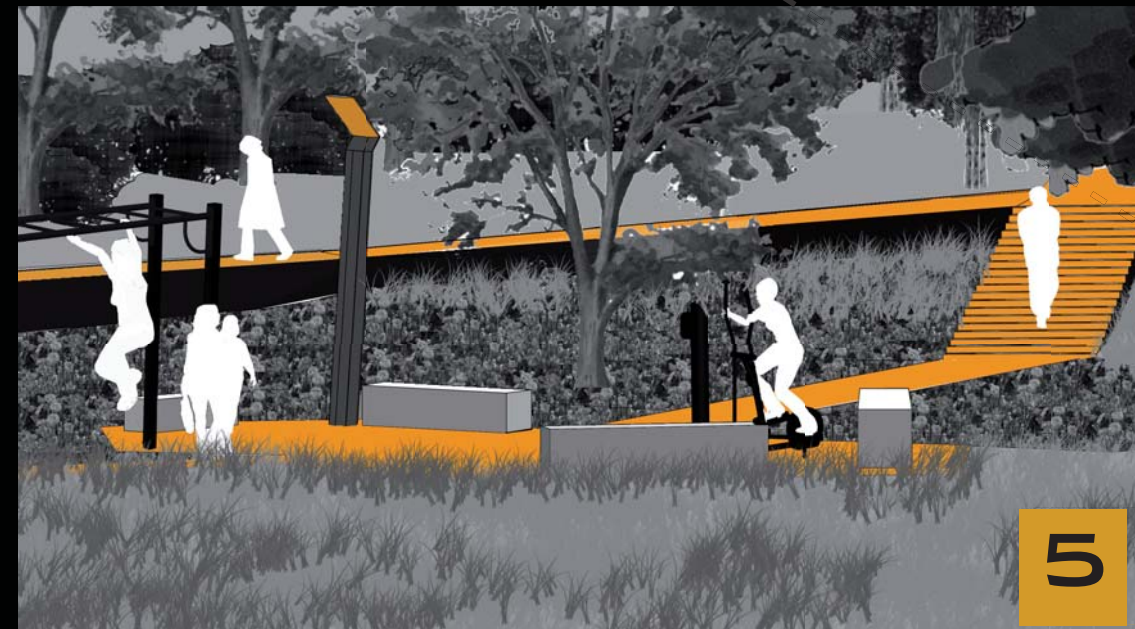
4

ENTRANCE

THE FOUNTAIN IN THE MAIN ENTRANCE IN NORTH IS NOT ONLY LANDMARK THAT ATTRACTS AND WELCOMES PEOPLE TO ENTER BUT SERVES ALSO AS A SOURCE OF WATER ENERGY THAT CONNECTS THE PARK.



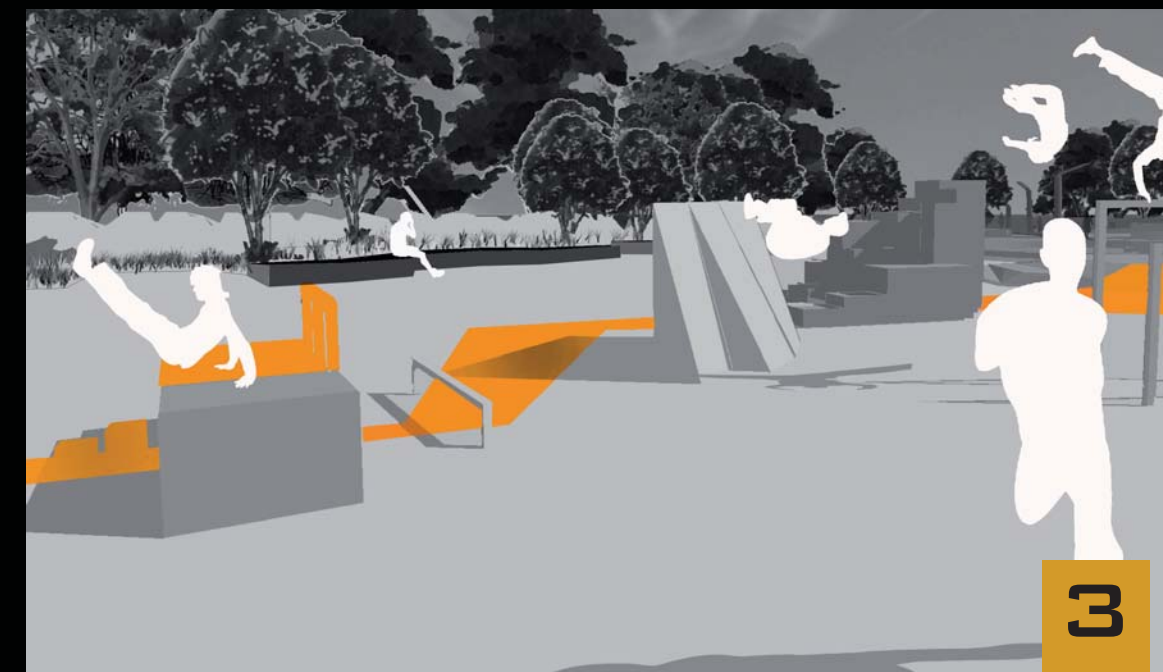
2



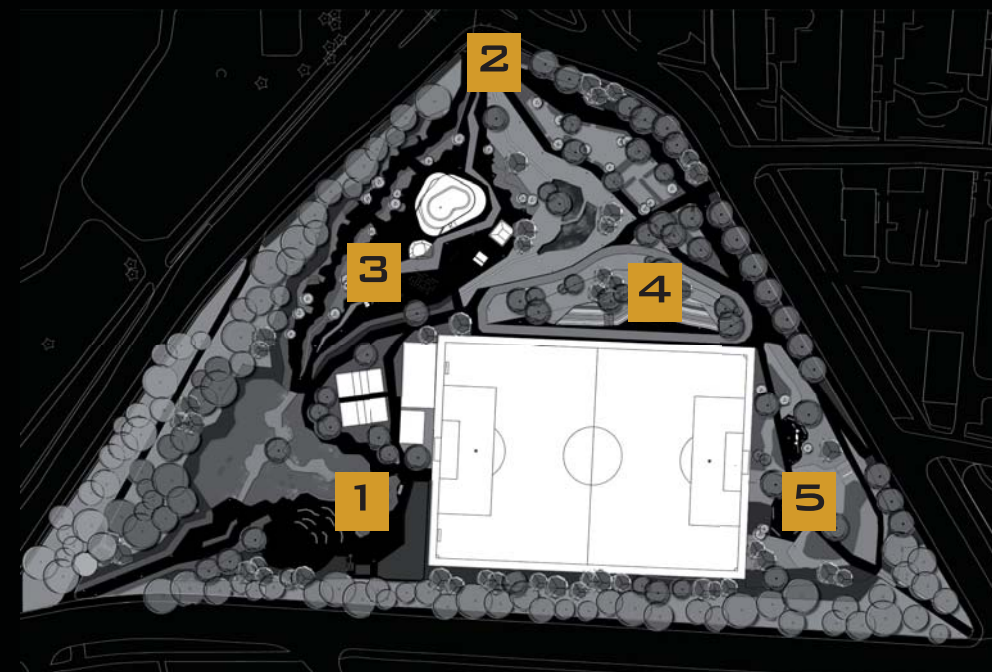
5

PARKOUR AREA

THIS AREA USES CHALLENGING FEATURES FOR TRAINING PARKOUR AND DYNAMIC ORANGE LINE ENCOURAGES TO CROSS OBSTACLES IN DEMANDING WAY. ATYPICAL CONCRETE BENCHES IN THE BACKGROUND PROVIDE PLACE FOR SPECTATORS.



3



AMPHITHEATER

THIS PLACE OFFERS A GREAT VIEW AT FOOTBALL MATCHES. IT ALSO ALLOWS TO RELAX BETWEEN GRASSES AND PERENNIALS AFTER A RUN OR NORDIC WALK.



1:200

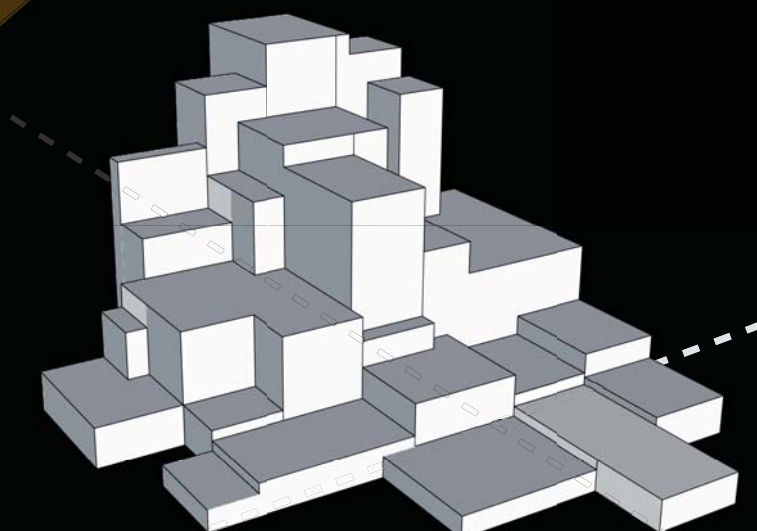
FITNESS

GARDEN

THIS AREA SITUATED IN THE SOUTH EAST CORNER PROVIDES EXERCISING EQUIPMENT FOR BOTH SENIORS AND YOUNGSTERS IN ORDER TO MINGLE DIFFERENT AGE GROUPS.



PARKOUR AREA



PARKOUR